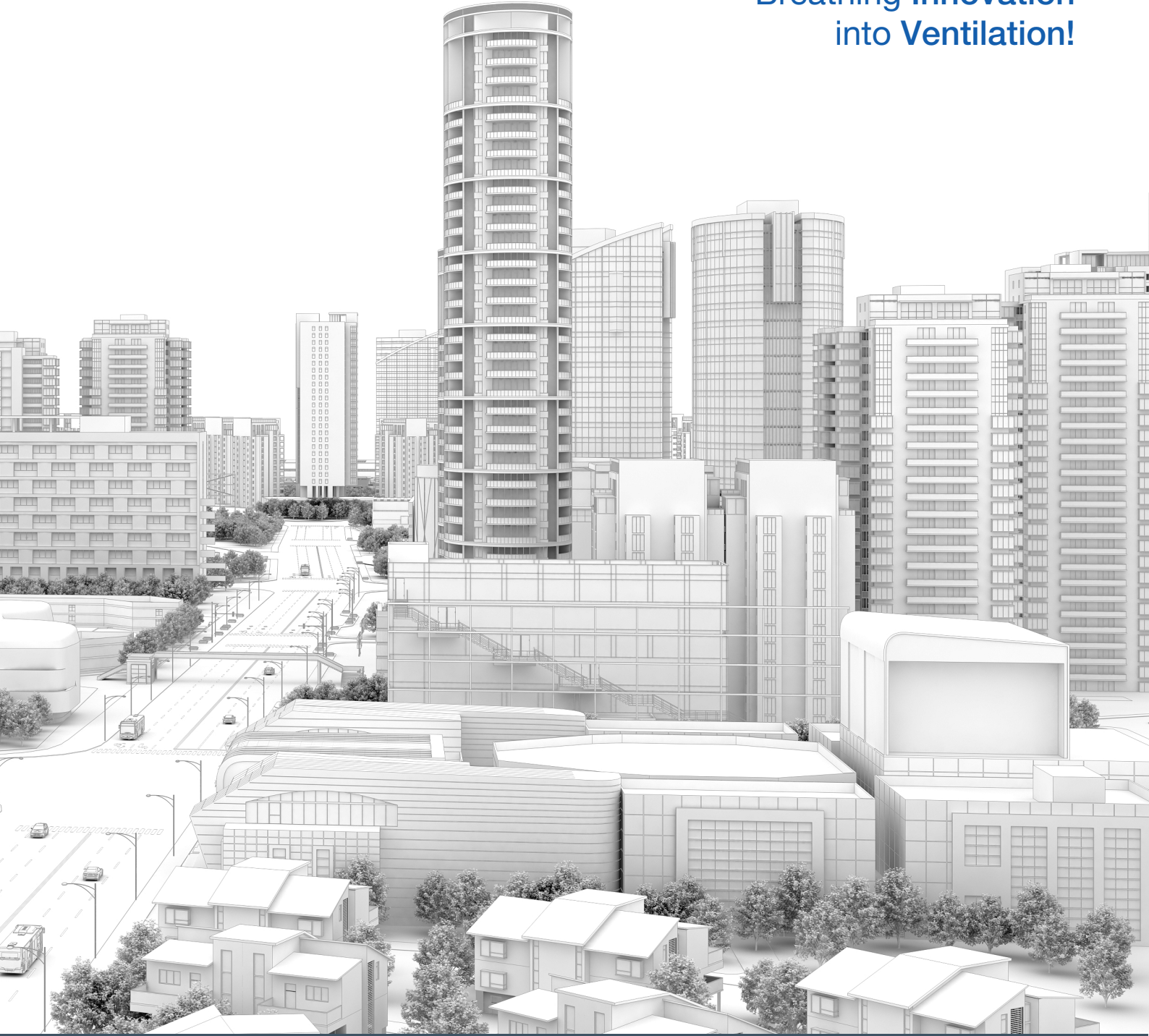


Breathing Innovation into Ventilation!



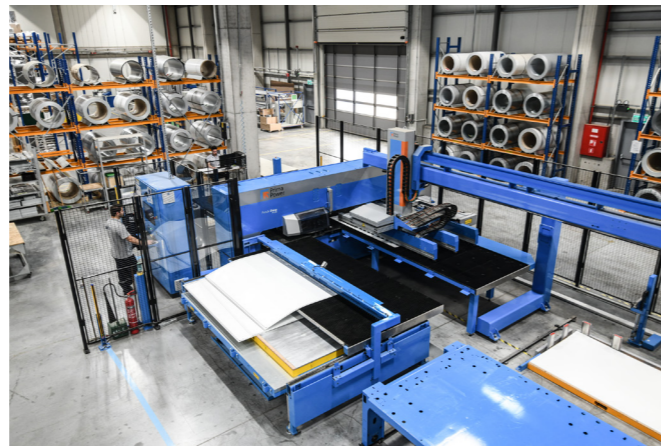
Welcome to AERA



Born in the innovative surroundings of the Bilimpark – Science and Technology Development Zone, AERA started with a dedicated Product Development Team with a simple mission: to enhance air quality everywhere. In 2016, we moved to our foundational facility in Pancar Industrial Zone. Covering over 3,000 m², this space is equipped with modern machinery, ensuring our products meet the highest standards and reach you efficiently.

That same year, we established our domestic sales office in Istanbul, marking our commitment to serve both local and international customers. 2017 was a pivotal year for us as we introduced our Modular Air Handling Units and Heat Recovery Ventilators to the market. By mid-2017, we began our journey towards achieving international certifications, ensuring our solutions stand up to global standards.

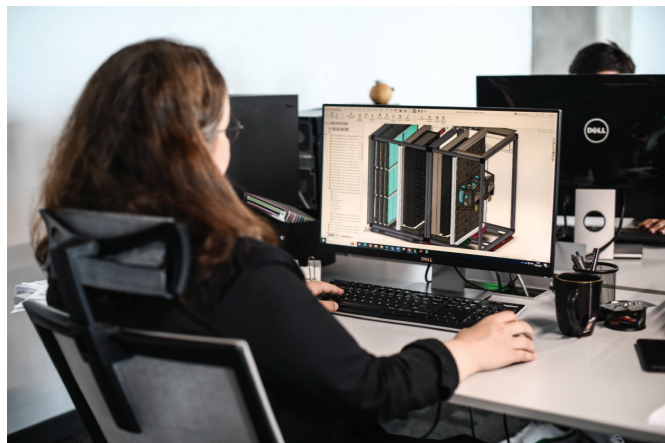
By the close of 2017, AERA broadened its portfolio with the introduction of the Compact Air Handling Units family. This range catered to diverse needs, including horizontal units for ceiling mounting and versatile standing units, both with plate and rotary heat recovery options.



Our commitment to innovation didn't stop there. In collaboration with a leading AHU Control Components manufacturer, we co-developed distinctive air handling unit controls. These state-of-the-art controls, conceived and crafted through international expertise, made their debut in the market the very same year.

Recognizing the burgeoning industry demand and our ever-growing aspirations, 2018 was a significant milestone: We acquired a spacious factory land spanning 10,000 m², setting the stage for further advancements and the promise of bringing even more refined ventilation solutions to our valued clientele.

The journey of AERA has always been marked by innovation and collaboration. A testament to this is our pioneering partnership with TUBITAK (Turkey's Scientific and Technological Research Council). This collaboration bore fruit in the form of our first government-subsidized development project. Our unique product designs further paved the way for us to receive State Funds, establishing our R&D Centre of Excellence.



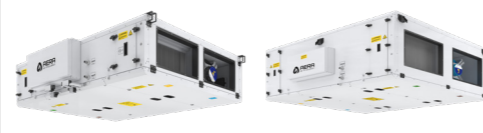
Our commitment to excellence was recognized globally in 2018 when EUROVENT certified our modular AHU range. This acknowledgment, particularly for outstanding casing performance (T2/TB2, EN 1886), set us apart. That year, our drive for innovation continued unabated, with the inception of development projects centered around panel casing design and ceiling-mounted air handling units equipped with rotary wheels.

AERA's name has grown to resonate powerfully, both within Turkish borders and beyond. Our distinction lies not just in our products but also in our unparalleled service offerings. This has enabled us to stand tall, often being the preferred choice over renowned competitors for state-of-the-art design projects.

In a pivotal move at the end of 2021, we saw the completion of our new production plant. This state-of-the-art facility now houses the majority of our production activities and operational offices, reflecting our relentless pursuit of growth and excellence.

With AERA, it's always about bringing cleaner, fresher air to spaces everywhere. We're here to serve, innovate, and grow alongside our community.





PRODUCT FAMILY

VESTA

AZURE

EVO COMPACT^{TOP}

EVO COMPACT^{TOP}

EVO COMPACT

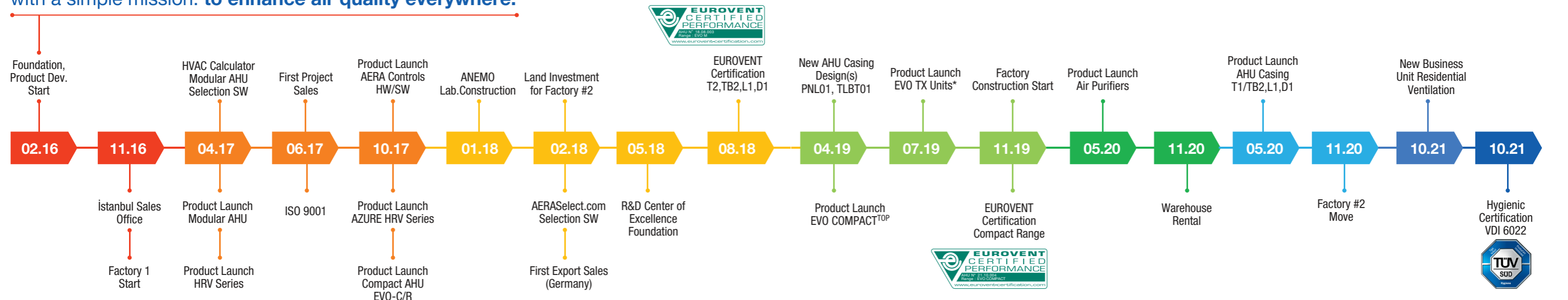
EVO-M

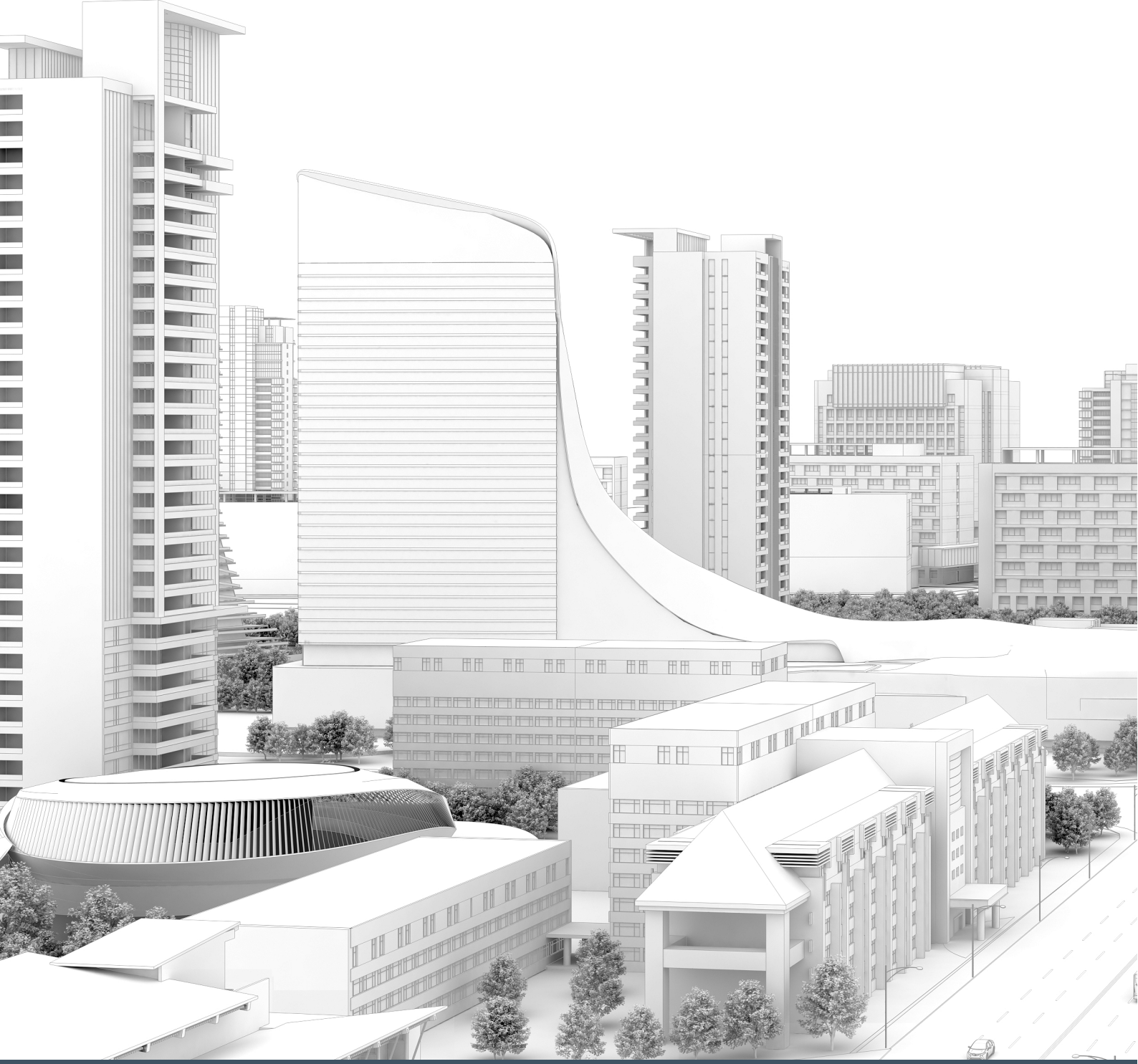
| | | | | | | | | | | | |
|----------------|---------------|--------------------|---------------|----------------|----------------------|----------------------|--------------------|-----------------|---|----------|----------|
| Product Name | VESTA HR | VESTA ERP | AZURE | AZURE Wheel | EVO-C ^{TOP} | EVO-R ^{TOP} | EVO-C | EVO-R | MAESTRO | THR | AVIT |
| Air Flow | 500-6000 m³/h | 1200-4200 m³/h | 500-3200 m³/h | 1500-5500 m³/h | 850-3500 m³/h | 1000-5500 m³/h | 750-8500 m³/h | 1000-15000 m³/h | 1000-85000 m³/h | | |
| Fan Type | AC | | EC | | | | EC | | AC/EC | | |
| Heat Recovery | Crossflow | Crossflow | Counterflow | Rotary | Counterflow | Rotary | Counterflow | Rotary | Crossflow / Counterflow / Rotary / Run Around | | |
| Filter Type | COARSE G4 | ePM1 60%/ePM10 60% | | | ePM1 60%/ePM10 60% | | ePM1 60%/ePM10 60% | | COARSE G4~ePM1 80% | | |
| Controls | SENSO | SENSO | SENSO+ | | SENSO+ | | SENSO+ | | OPTIONAL | | |
| Erp Compliance | - | | ERP 2018 | | ERP 2018 | | ERP 2018 | | | ERP 2018 | ERP 2018 |
| Insulation | 10 mm | 30 mm | 50 mm | | 50 mm | | 50 mm | | | | 60 mm |
| En 1886 | - | - | T2/TB2 | | T2/TB2 | | T2/TB2 | | T3/TB2 | T2/TB2 | T2/TB1 |

ACCESSORIES

| | | | | | | | | | | | |
|------------------------|-------------------------|--------|-------------------------------|---|---|---|-------------------------------|--|---|-------------------------------|--|
| Pre-Heater | 1 Step Electrical | | Stepless PWM Electrical | | | | Stepless PWM Electrical | | | 3 Step Max/Stepless PWM | |
| After-Heater | 2 Step Electrical/Water | | Stepless PWM Electrical/Water | | | | Stepless PWM Electrical/Water | | | 3 Step Max/Stepless PWM/Water | |
| Cooler | | | Chilled Water/DX | | | | Chilled Water/DX | | | | |
| Controls | SENSO+ | SENSO+ | SENSO+ INCLUDED | | | | SENSO+ INCLUDED | | | SENSO+ /EXO SENSO | |
| Constant Flow | - | - | Standard | | | | Standard | | | DMD | |
| Constant Pressure(Vav) | - | - | Presigo | | | | Presigo | | | DMD | |
| Sorption Wheel | - | - | - | + | - | + | - | | + | | |
| ePM1 80% Filter | - | + | + | - | | | | | + | | |
| Vod | | | | | | + | | | | | |

AERA started with a dedicated Product Development Team with a simple mission: **to enhance air quality everywhere.**





**AERA Air Conditioning Ventilation
Technologies Corporation**

Factory I: 14. Cadde, No:13, Pancar OSB

Factory II: 3. Cadde, No:13, Pancar OSB

Torbalı/Izmir-Türkiye, +90 232 799 01 11

E-mail: sales@aera.com.tr

Sales Headoffice: Özdemir Sok. Kurtuluş Apt. No: 5
Kadıköy/İstanbul-Türkiye, +90 216 504 76 86

aera.com.tr

